

### 2024 DEMOGRAPHICS

3 Mile | 5 Miles | 10 Miles



#### Population

37,746 | 77,684 | 405,665



#### Daytime Population

20,180 | 54,012 | 290,028



#### Median Household Income

\$91,015 | \$90,569 | \$106,901

## RETAIL FOR LEASE

Gravois Village Plaza | 4560 Gravois Road | High Ridge, Missouri 63049  
1,400 - 22,250 SF | Call for Details | Triple Nets: \$2.00/SF

### PROPERTY DETAILS

Anchored by Farm & Home Supply  
Great visibility from Highway 30  
Large monument signage available  
Ample parking  
Highway 30 - 36,130 VPD

### Ashley Krekovich

314.785.7635  
akrekovich@paceproperties.com

### Evan Barnett

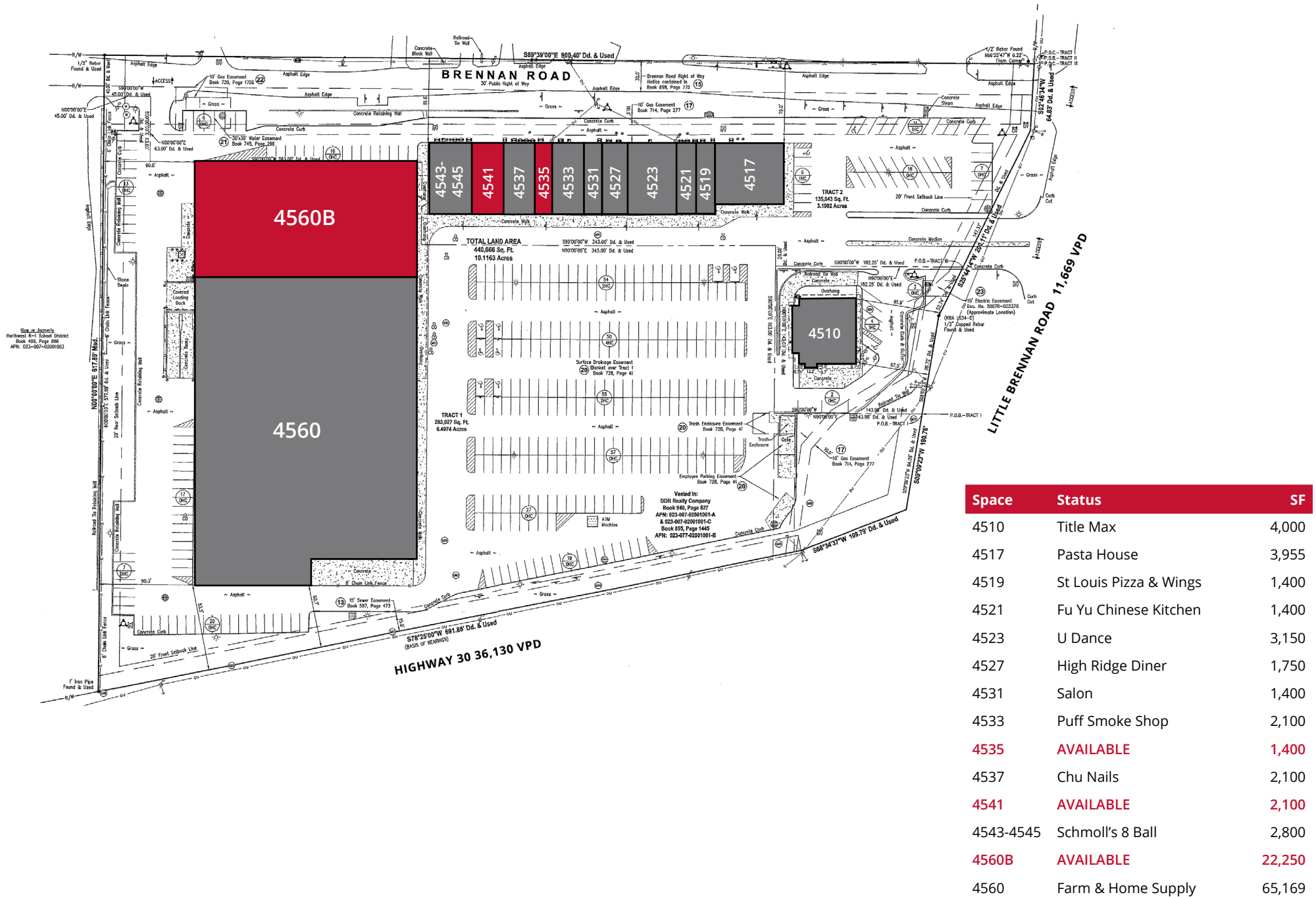
314.785.7678  
ebarnett@paceproperties.com

PACEPROPERTIES.COM | 314.968.9898

1401 South Brentwood Boulevard, Suite 900 | St. Louis, Missouri 63144

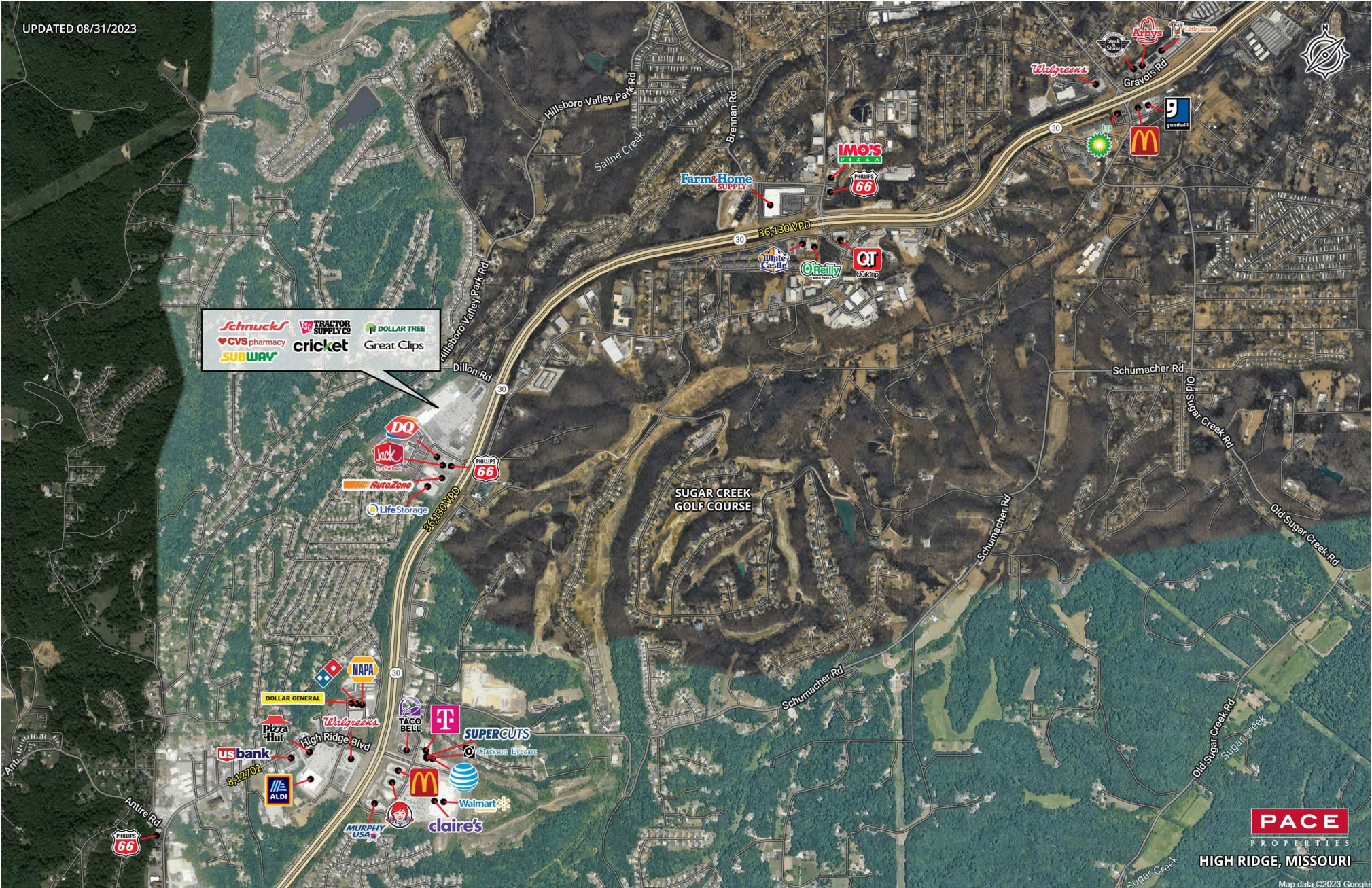
The information contained herein is not warranted, although it has been obtained from the owner/landlord of the subject property or from other sources that Pace Properties, Inc. deems reliable, and is subject to change without notice. Owner/landlord and Pace Properties, Inc. make no representations as to the environmental condition of the subject property and recommend tenant's independent investigation.

# Site Plan



# Trade Area Aerial

UPDATED 08/31/2023



PACEPROPERTIES.COM | 314.968.9898

1401 South Brentwood Boulevard, Suite 900 | St. Louis, Missouri 63144

The information contained herein is not warranted, although it has been obtained from the owner/landlord of the subject property or from other sources that Pace Properties, Inc. deems reliable, and is subject to change without notice. Owner/landlord and Pace Properties, Inc. make no representations as to the environmental condition of the subject property and recommend tenant's independent investigation.